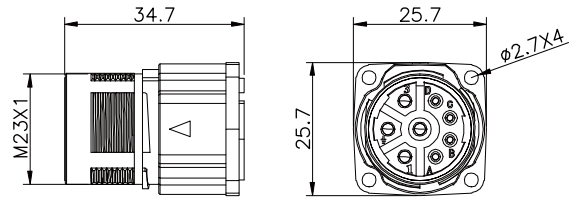


923 power male straight metal plug connector



Technical parameters

Shell material	Copper/Zinc
Core material	PBT/PA66
Overmold material	PVC/TPU [®]
Terminal material	Phosphor copper
Temperature	-40°C ~ +125°C

Insulation resistance	≥100mΩ
Contact resistance	≤5mΩ
Degree of protection	IP67
Mating cycle	≥500次
Cable diameter	

M 2 3

Electric parameter

pin number	code type A	rated current	rated voltage		cable size		cable material	dealing at the end cable
			A/C	D/C	AWG	mm ²		
6		30A	630V	630V	14	2.5	PVC/PUR	- no dealing - customized - strip and tinn - to other connector
8		9A/20A	250V/630V	250V/630V	18/14	1/2.5	PVC/PUR	

Order method

<p>Ⓐ Regular type</p> <p>923-<input type="text"/>-H-<input type="text"/>-P-<input type="text"/>-<input type="text"/>-<input type="text"/>-<input type="text"/></p> <p style="text-align: center;"> pin number code type (except A type) overmold material cable material cable length others </p>	<p>Ⓑ Customized</p> <p>623-<input type="text"/>-H-<input type="text"/>-P-<input type="text"/>-<input type="text"/></p> <p style="text-align: center;"> pin number code type (except A type) customized item number others </p>
---	--