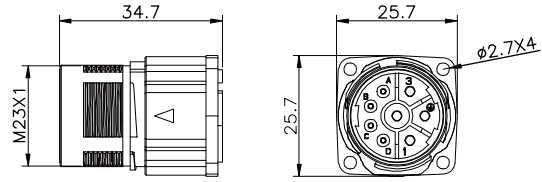


# 923 power female straight metal socket connector



## Technical parameters

Shell material	Copper/Zinc
Core material	PBT/PA66
Overmold material	PVC/TPU <sup>®</sup>
Terminal material	Phosphor copper
Temperature	-40°C~+125°C

Insulation resistance	≥100mΩ
Contact resistance	≤5mΩ
Degree of protection	IP67
Mating cycle	≥500次
Cable diameter	

M 23

## Electric parameter

pin number	code type A	rated current	rated voltage		cable size		cable material	dealing at the end cable
			A/C	D/C	AWG	mm <sup>2</sup>		
6		30A	630V	630V	14	2.5	PVC/PUR	- no dealing - customized
8		9A/20A	250V/630V	250V/630V	18/14	1/2.5	PVC/PUR	- strip and tinn - to other connector

## Order method

<p>Ⓐ Regular type</p> <p>923-<input type="text"/>-H-<input type="text"/>-S-<input type="text"/>-<input type="text"/>-<input type="text"/>-<input type="text"/></p> <p>pin number      code type (except A type)      overmold material      cable material      cable length      others</p>	<p>Ⓑ Customomized</p> <p>623-<input type="text"/>-H-<input type="text"/>-S-<input type="text"/>-<input type="text"/></p> <p>pin number      code type (except A type)      customized item number      others</p>
--	---